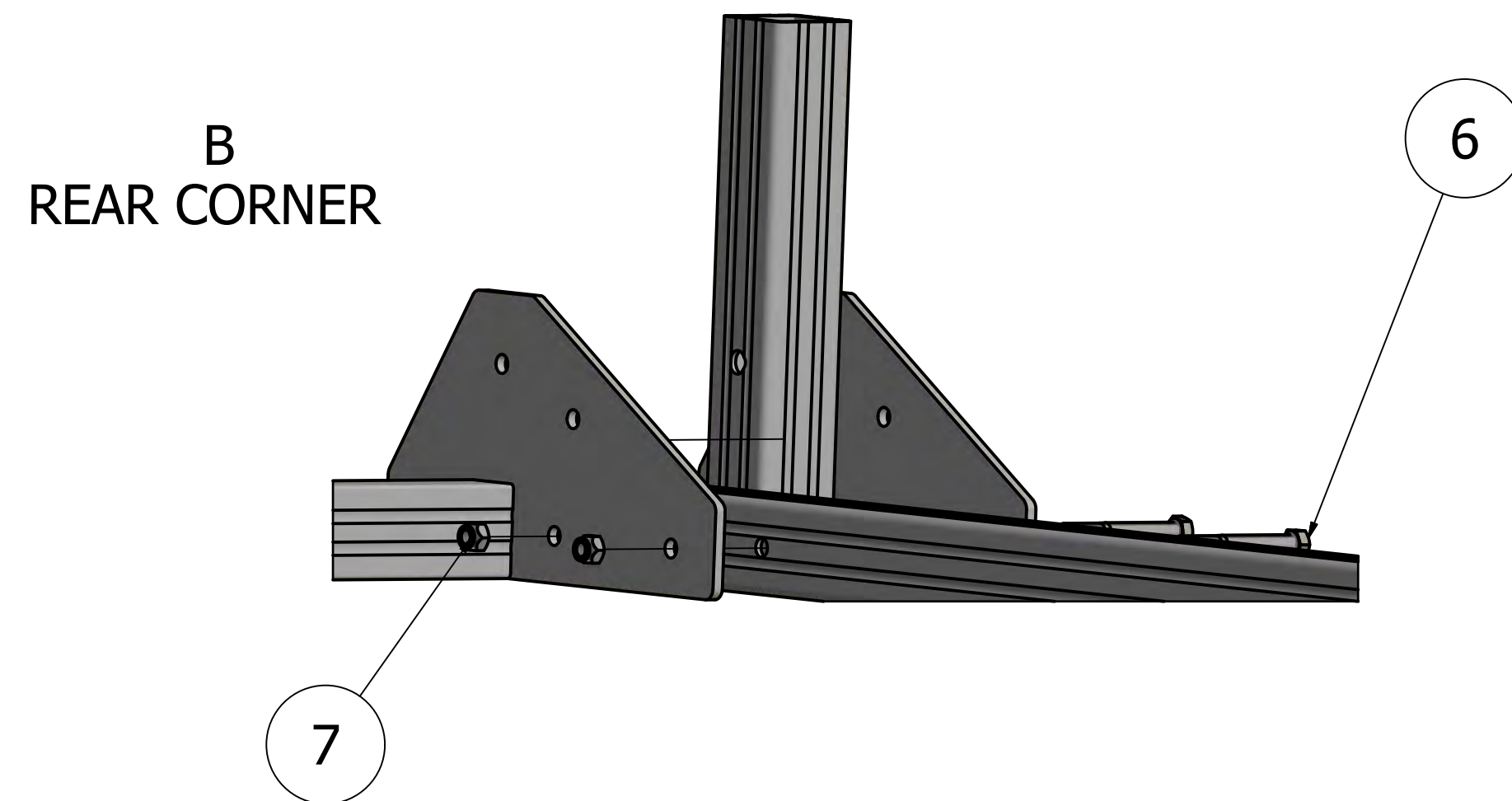
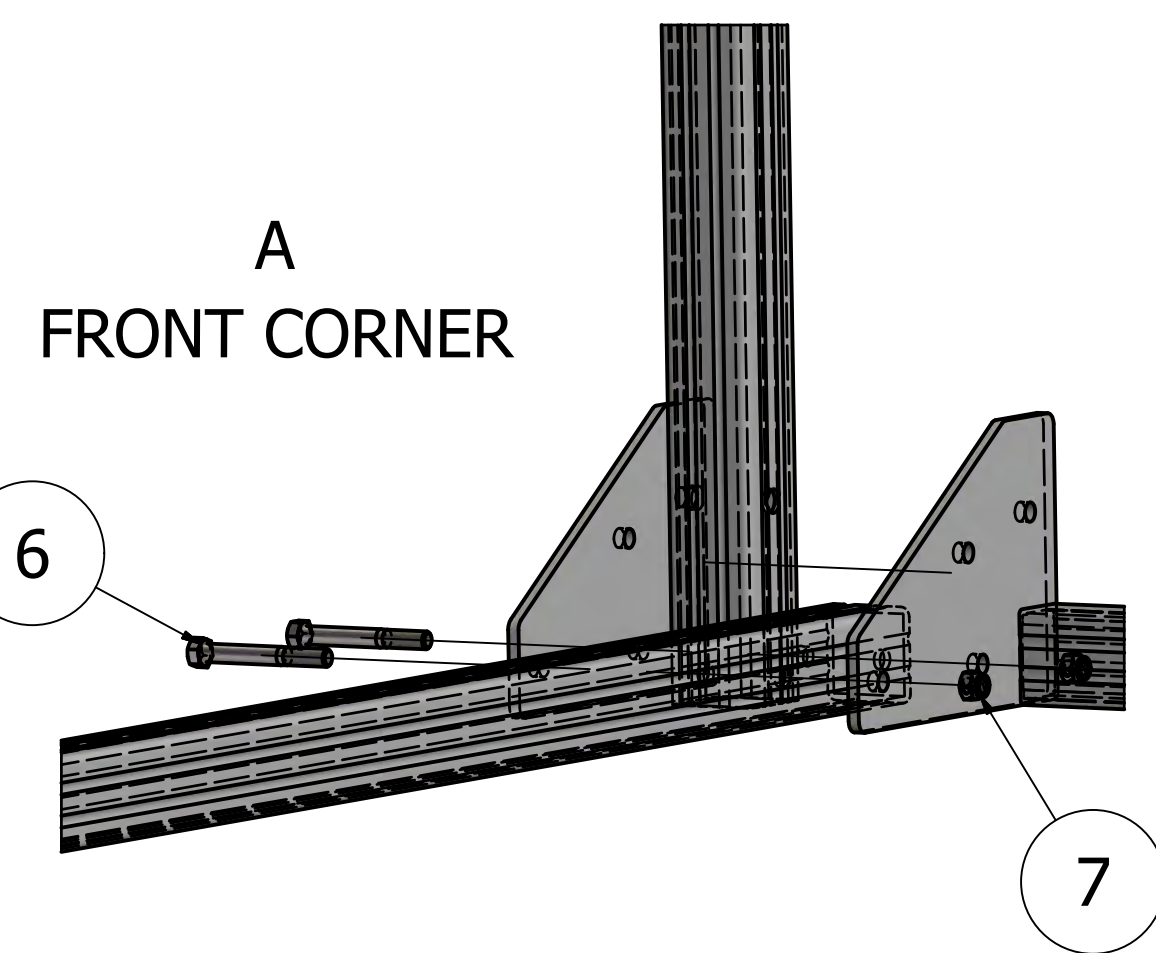
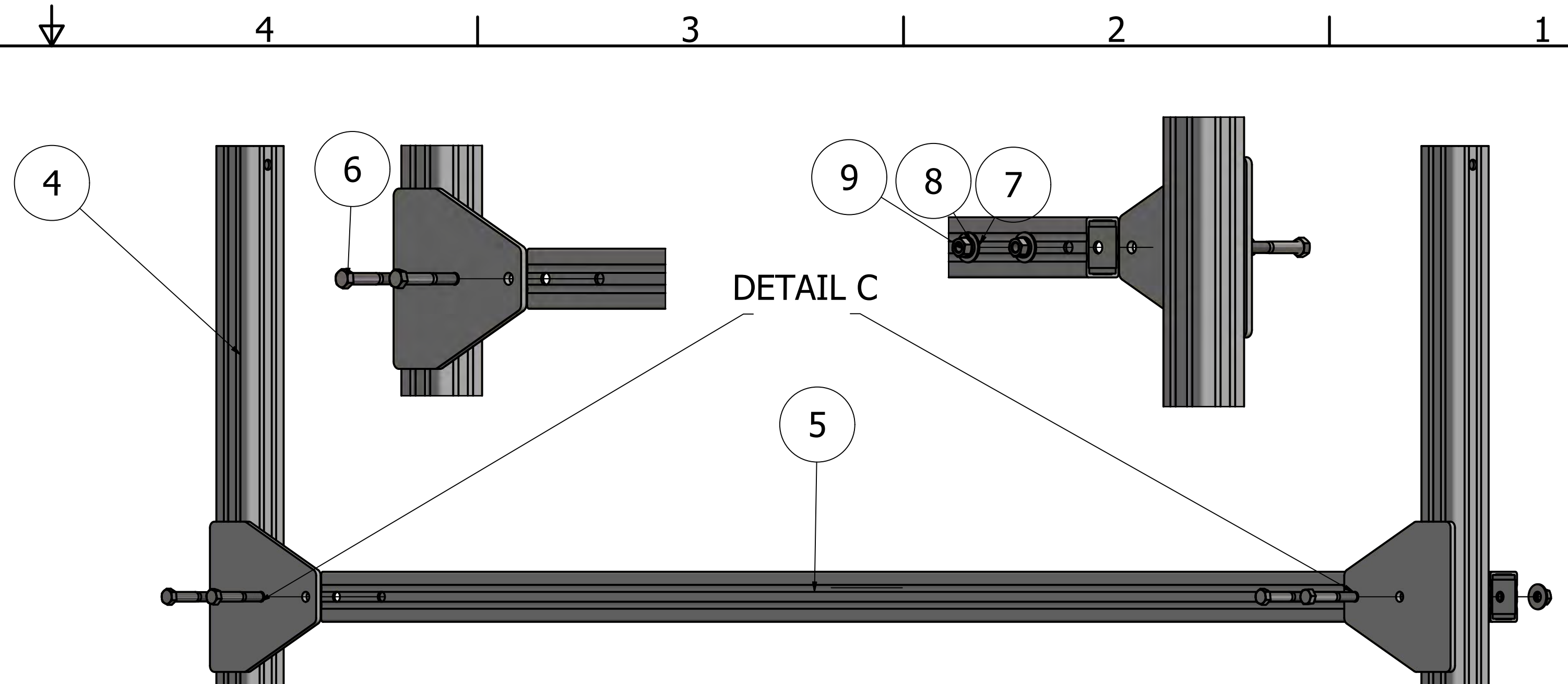
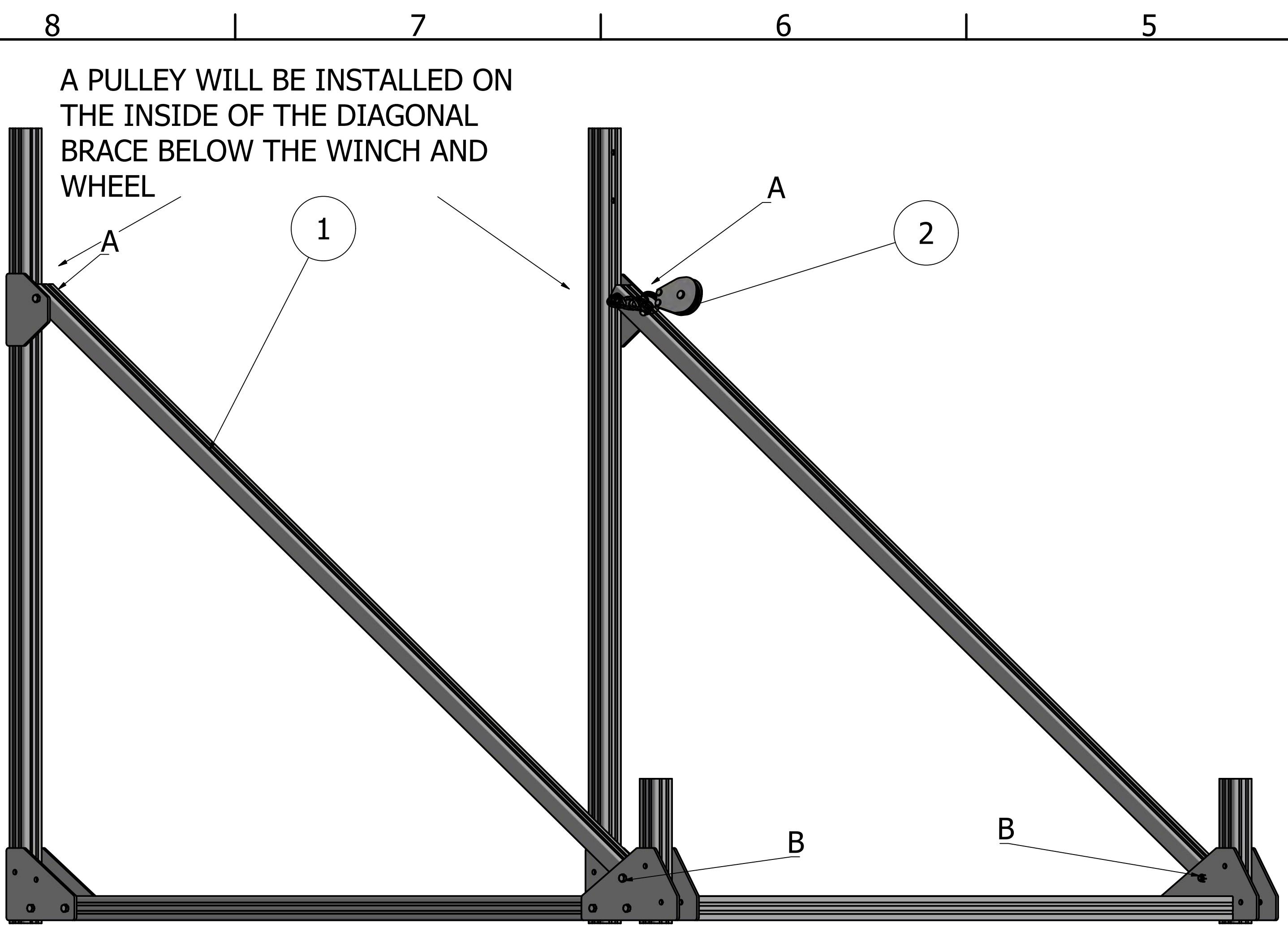


ATTACH THE CORNER WINCH POST TO THE FRONT CROSS MEMBER (DETAIL A). ATTACH REAR CORNER LEG POST TO REAR CROSSMEMBER (DETAIL B). DO NOT TIGHTEN NUTS, ONLY FINGER TIGHTEN NUTS UNTIL THE MAIN ASSEMBLY IS PUT TOGETHER.

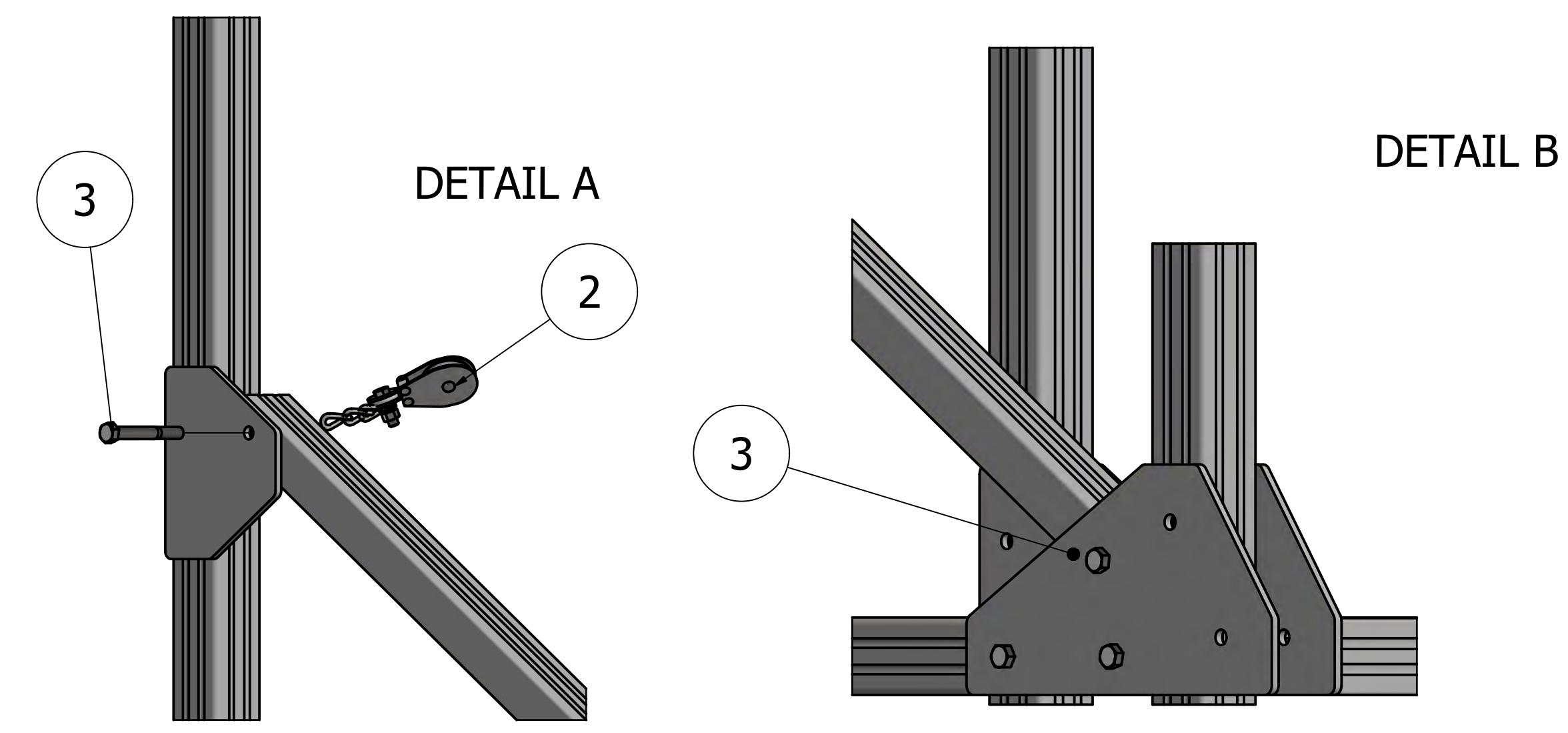


PARTS LIST			
ITEM	QTY	PART NUMBER	DESCRIPTION
1	2	3A2020145T066LEFT/RIGHT	LEFT & RIGHT WINCH POST
2	2	3A2020145T072	BOTTOM SIDE X-MEMBER
3	2	3A2020145T012LEFT/RIGHT	LEFT & RIGHT REAR LEG POST
4	1	2LA1266FRONTXMEM	FRONT CROSS MEMBER
5	1	2LA1266REARXMEM	REAR CROSS MEMBER
6	8	H3830NCB	3/8" X 3" HEX BOLT
7	8	H3800NCLN	3/8" LOCK NUT

DRAWN Joel Newman	5/22/2018	TITLE	
CHECKED		REV	
QA		SIZE D	PRT NO 2LA1266KSTEP 1
MFG		SCALE .15	REV
APPROVED		SHEET 1 OF 1	



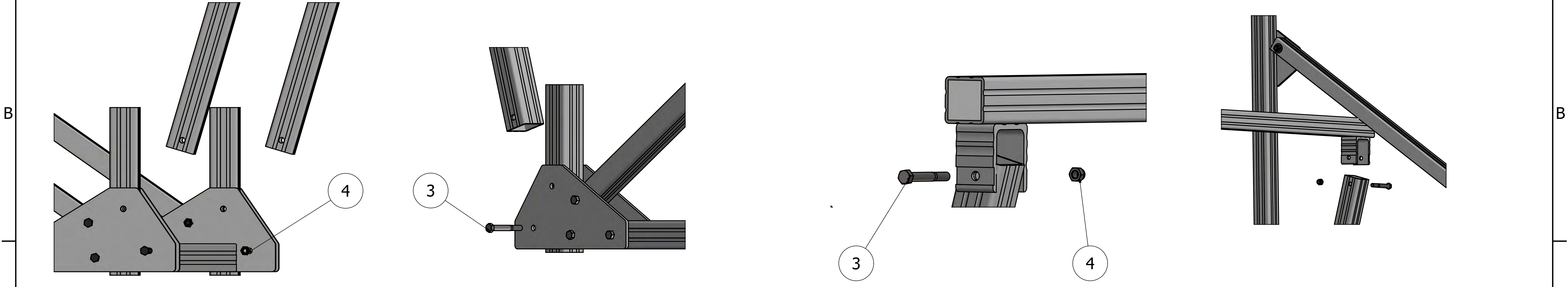
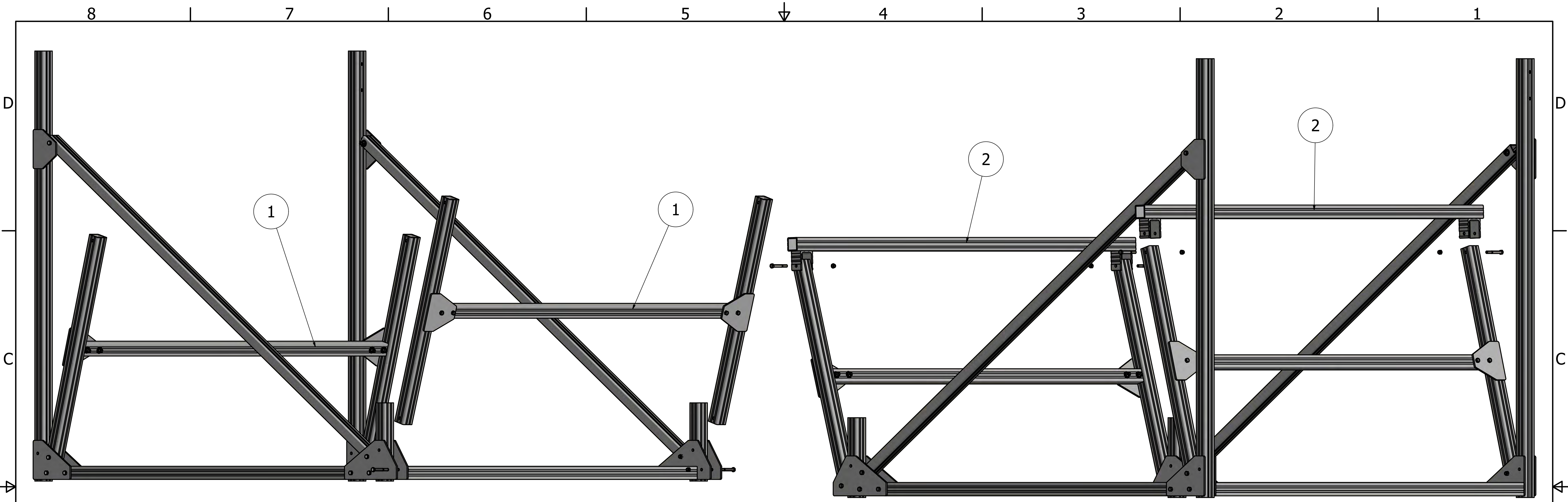
PARTS LIST			
ITEM	QTY	PART NUMBER	DESCRIPTION
4	4	3A2020145T036	2" SQ. PIVOTS 30"
5	2	3A2015100T065B	1 1/2" X 2" PIVOT CROSS MEMBER
6	8	H3825NCB	3/8" X 2 1/2" HEX BOLT
7	8	H3800ZFW	3/8" FLAT WASHER
8	8	H3800ZLW	3/8" LOCK WASHER
9	8	H3800NCN	3/8" HEX NUT



ATTACH THE DIAGONAL BRACE TO THE WINCH POST AND THE REAR LEG POST (DETAIL A & B). ON THE SIDE THAT YOU LOCATE THE WINCH AND WHEEL A PULLEY IS BOLTED TO THE INSIDE OF THE DIAGONAL BRACE. ASSEMBLE THE FRONT AND REAR PIVOTS (DETAIL C), DO NOT TIGHTEN FASTENERS UNTIL THE FRAME IS COMPLETELY ASSEMBLED

PARTS LIST			
ITEM	QTY	PART NUMBER	DESCRIPTION
1	2	3A2015100T086	1 1/2" X 2" REQ DIA BRACE 86"
2	1	H1500PULLEY	PULLEY ASSEMBLY WITH CAHIN
3	4	H3830NCB	3/8" X 3" HEX BOLT
4	2	H3800NCLN	3/8" LOCK NUT
7	2	ANSI B18.22.1 - 3/8 - Regular - Type B	Plain Washer (Inch)Type A and B
8	2	ASME B18.21.1 - 3/8	Regular Helical Spring Lock Washers(Inch Series)
9	2	ANSI B18.2.2 - 3/8 - 16	Hex Nuts (Inch Series) Hex Nut

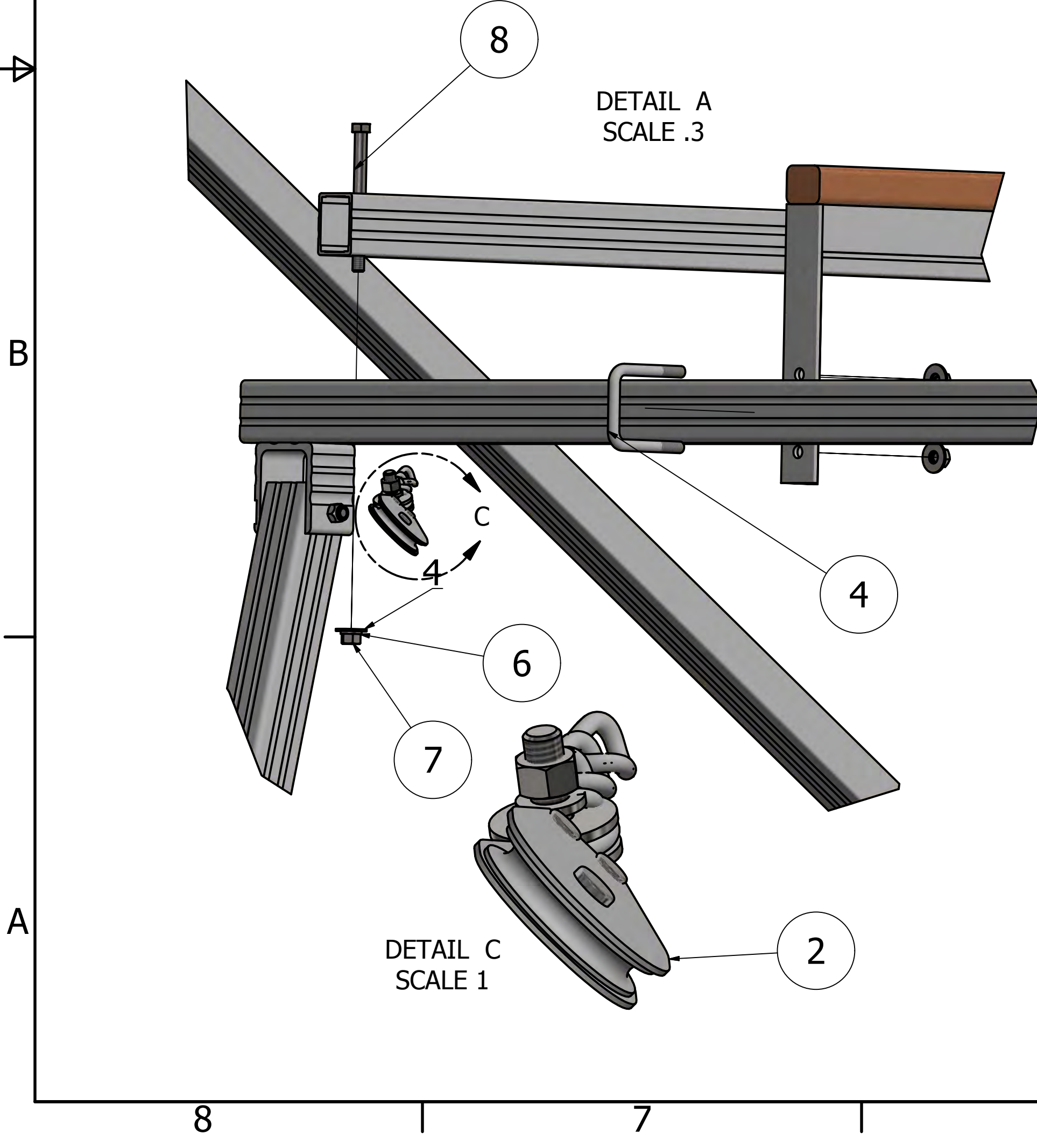
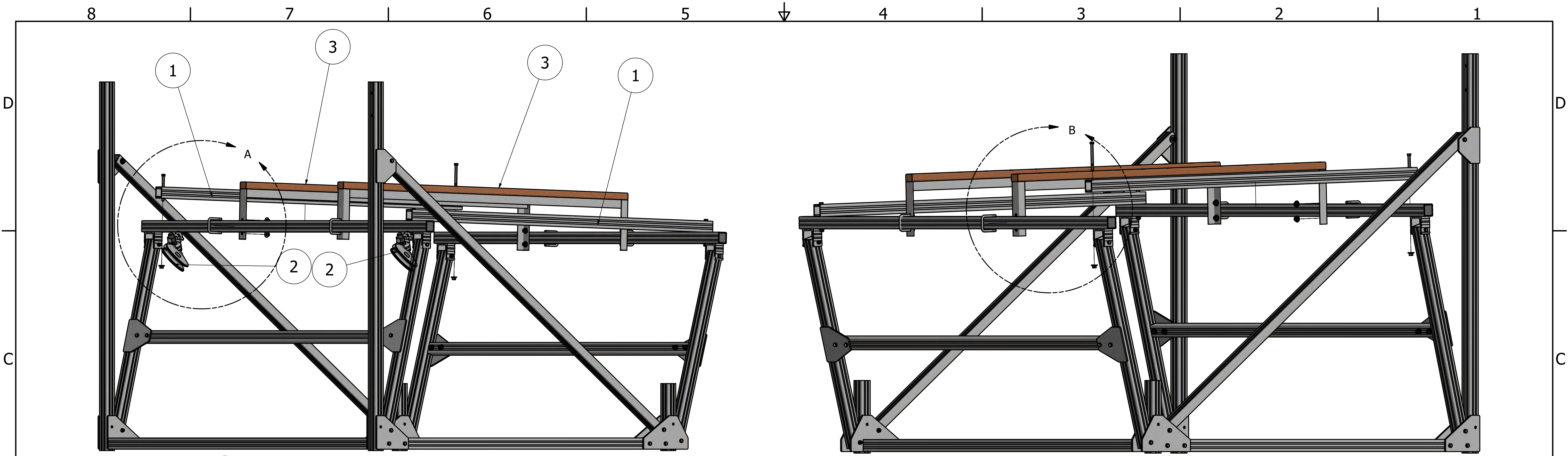
DRAWN Joel Newman	5/22/2018	TITLE	
CHECKED		REV	
QA		SIZE D	PRT NO 2LA1266KSTEP 3
MFG		SCALE 0.14	REV
APPROVED		SHEET 1 OF 1	



PLACE THE PIVOTS IN THE FRONT AND REAR AND INSERT HARDWARE. ON THE TOP SIDE OF THE PIVOTS PLACE THE BED MEMBERS AND INSERT HARDWARE.

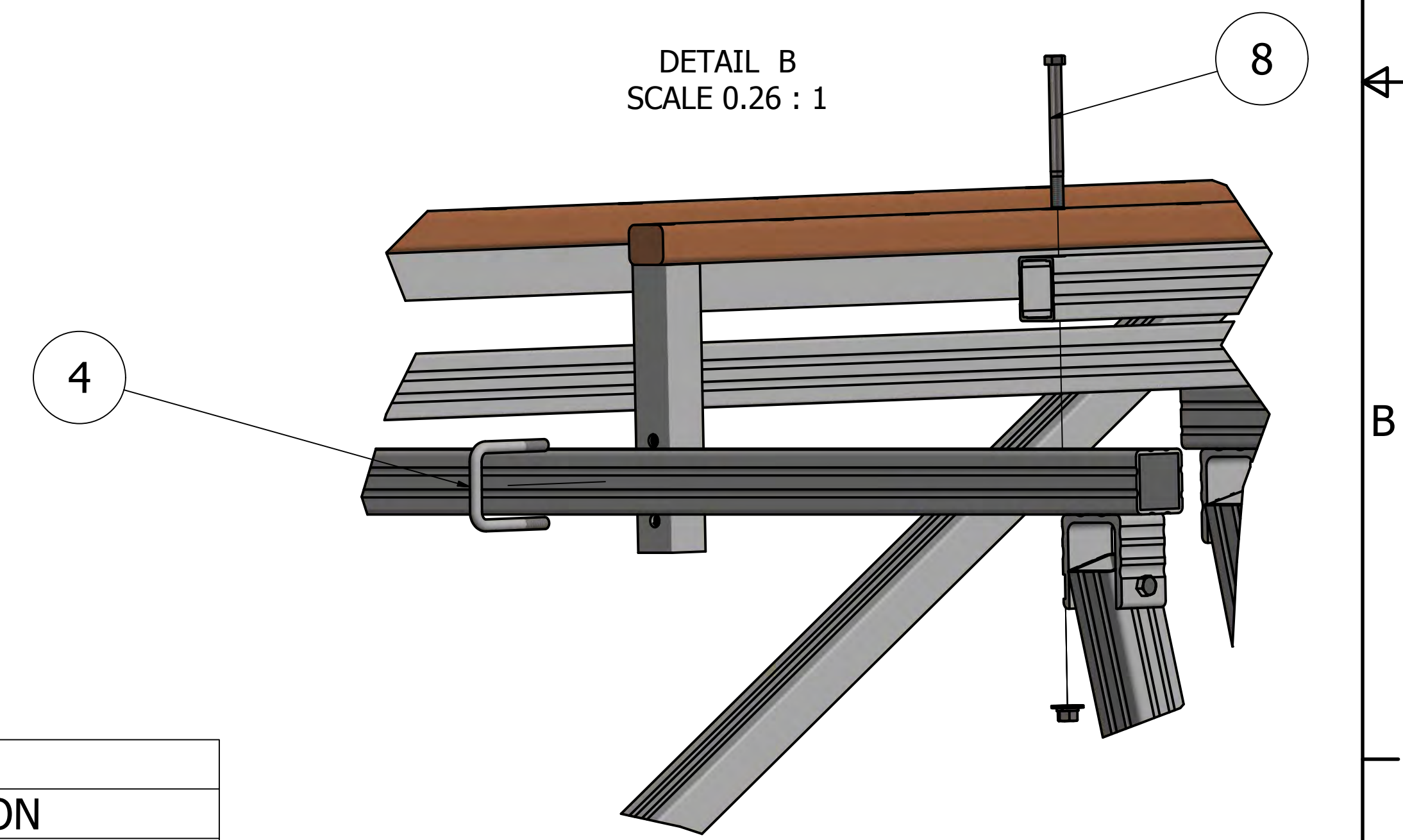
PARTS LIST			
ITEM	QTY	PART NUMBER	DESCRIPTION
1	2	PIVOTS	FRONT AND REAR PIVOTS
2	2	3A2020145T072BED	
3	8	H3830NCB	3/8" X 3" HEX BOLTS
4	8	H3800NCLN	3/8" LOCK NUT

DRAWN Joel Newman	5/22/2018	TITLE	
CHECKED		REV	
QA		SIZE D	PRT NO 2LA1266KSTEP 4
MFG		SCALE 0.14	SHEET 1 OF 1
APPROVED			



DETAIL A
SCALE .3

ATTACH THE 2- 1 1/2"x 2" -76" REQ TUBE TO THE FRONT AND REAR BED MEMBERS (DETAIL A). INSERT THE BOLT FROM THE TOP SIDE THROUGH THE BED MEMBER. A PULLEY WITH 3 CHAIN LINKS IS BOLTED TO THE BOTTOM SIDE OF THE BED MEMBER ON BOTH SIDE (DETAIL C). ATTACH THE BUNKS TO THE BED MEMBERS, THE DISTANCE BETWEEN THE 2 BUNKS TO SET TO FIT THE WATER CRAFT (DETAIL B).



DETAIL B
SCALE 0.26 : 1

PARTS LIST			
ITEM	QTY	PART NUMBER	DESCRIPTION
1	2	3A2015100T076	1 1/2" X 2" REQ TUBE 76"
2	2	H1500PULLEY	PULLEY ASSEMBLY
3	2	2LA1266BUNK	BUNKS
4	4	H2530U38	2 1/2" X 3"-3/8" U-BOLT
5	12	H3800ZFW	3/8" FLAT WASHER
6	12	H3800ZLW	3/8" LOCK WASHER
7	12	H3800NCN	3/8" HEX NUTS
8	4	H3845NCB	3/8" X 4 1/2" HEX BOLT
13	1	H3800ZFW	3/8" FLAT

DRAWN Joel Newman	5/23/2018	TITLE	
CHECKED		REV	
QA		SIZE D	PRT NO 2LA1266KSTEP 5
MFG		SCALE 0.12	REV
APPROVED		SHEET 1 OF 1	