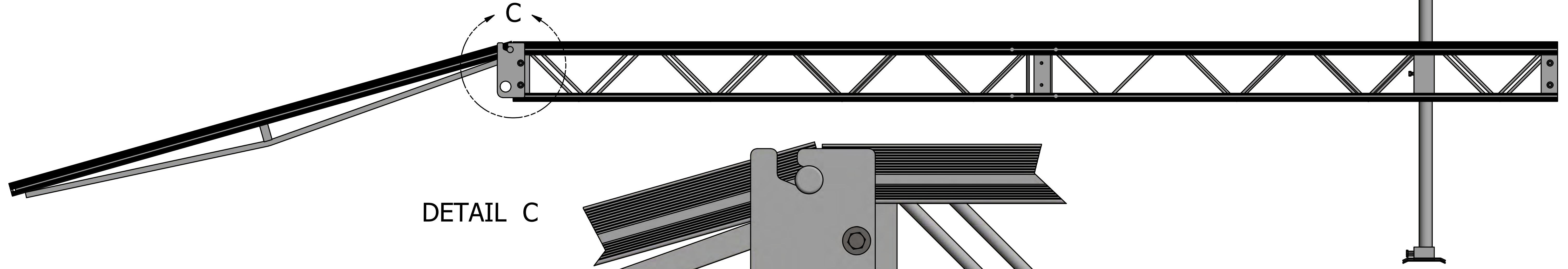


DETAIL A

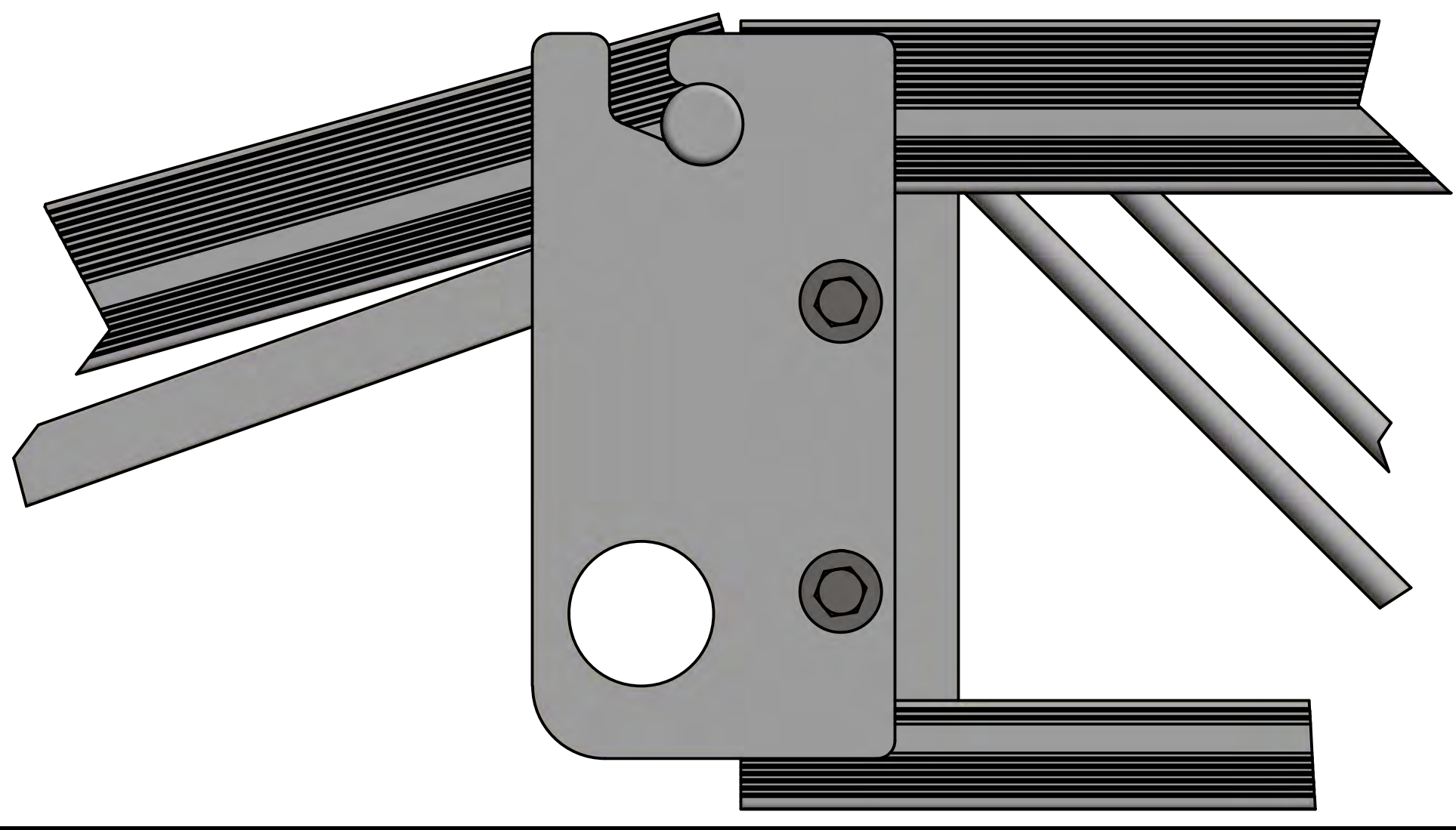
DETAIL B

PARTS LIST			
ITEM	QTY	PART NUMBER	DESCRIPTION
1	2	3A5000190S010	RAMP PLATE
2	12	H4000ZFW	7/16" FLAT WASHER
3	4	H4415NCB	7/16" X 1 1/2" HEX BOLT
4	4	H4400NCN	7/16" NUT

BOLT THE THE RAMP PLATE TO THE SIDE OF THE DOCK, MAKE SURE TO PUT 1- 7/16" WASHER BETWEEN THE RAMP PLATE AND CORNER DOCK ANGLE IRON.(DETAIL A & B) TIGHTEN THE BOLTS AND SLIDE THE RAMP INTO THE SLOTS OF THE RAMP PLATE.(DETAIL C)

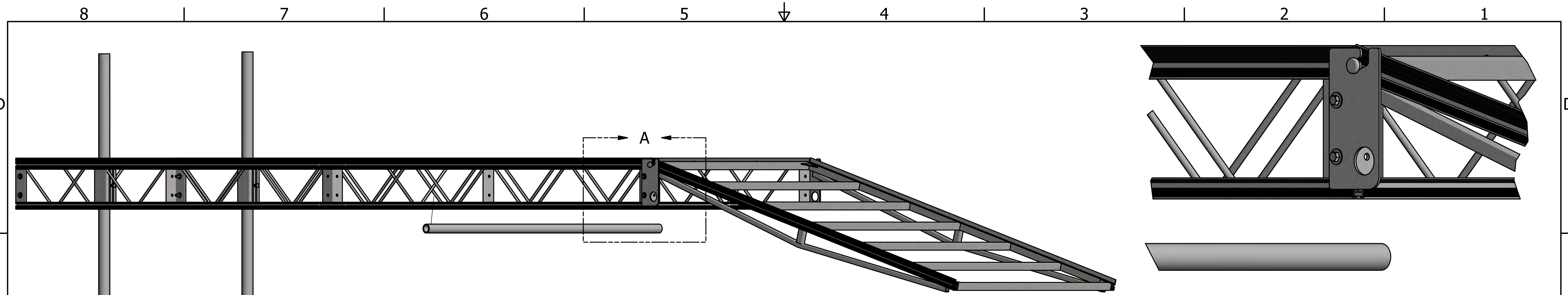


DETAIL C

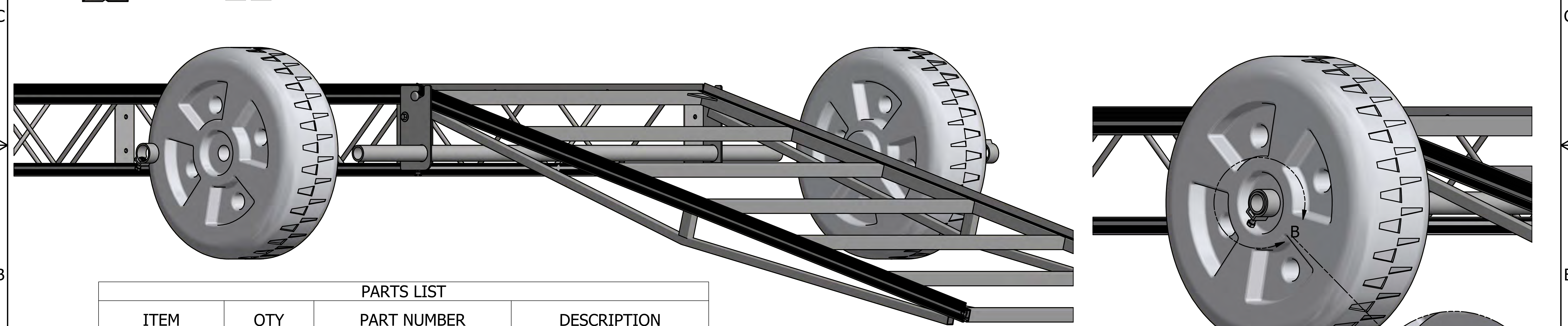


DRAWN Joel Newman	3/15/2019	TITLE	
CHECKED		1ADR48 AND 1ADR44 RAMP	
QA		SIZE	DWG NO
MFG		D	1ADR48-RAMP
APPROVED		SCALE	REV





DETAIL A



DETAIL B

PARTS LIST			
ITEM	QTY	PART NUMBER	DESCRIPTION
1	2	3A5000190S010	RAMP PLATE
2	12	H4000ZFW	7/16" FLAT WASHER
3	4	H4415NCB	7/16" X 1 1/2" HEX BOLT
4	4	H4400NCN	7/16" NUT
8	2	CDCKTIRE	DOCK TIRE
9	2	3A2723190T002	RETAINING RING
10	1	2DAX72	1 1/2" RD 70"

AFTER MOUNTING THE RAMP PLATE INSERT THE AXEL THROUGH THE HOLE UNTIL YOU HAVE THE EQUAL DISTANCE STICKING OUT FROM BOTH SIDES.(DETAIL A) SLIDE THE DOCK TIRES ONTO THE AXEL FOLLOWED BY THE RETAINING RINGS AND TIGHTEN SET SCREW. (DETAIL B)

DRAWN Joel Newman	3/15/2019	TITLE	
CHECKED		1ADR48 AND 1ADR44 RAMP	
QA		SIZE	DWG NO
MFG		D	1ADR48-RAMP
APPROVED		SCALE	REV